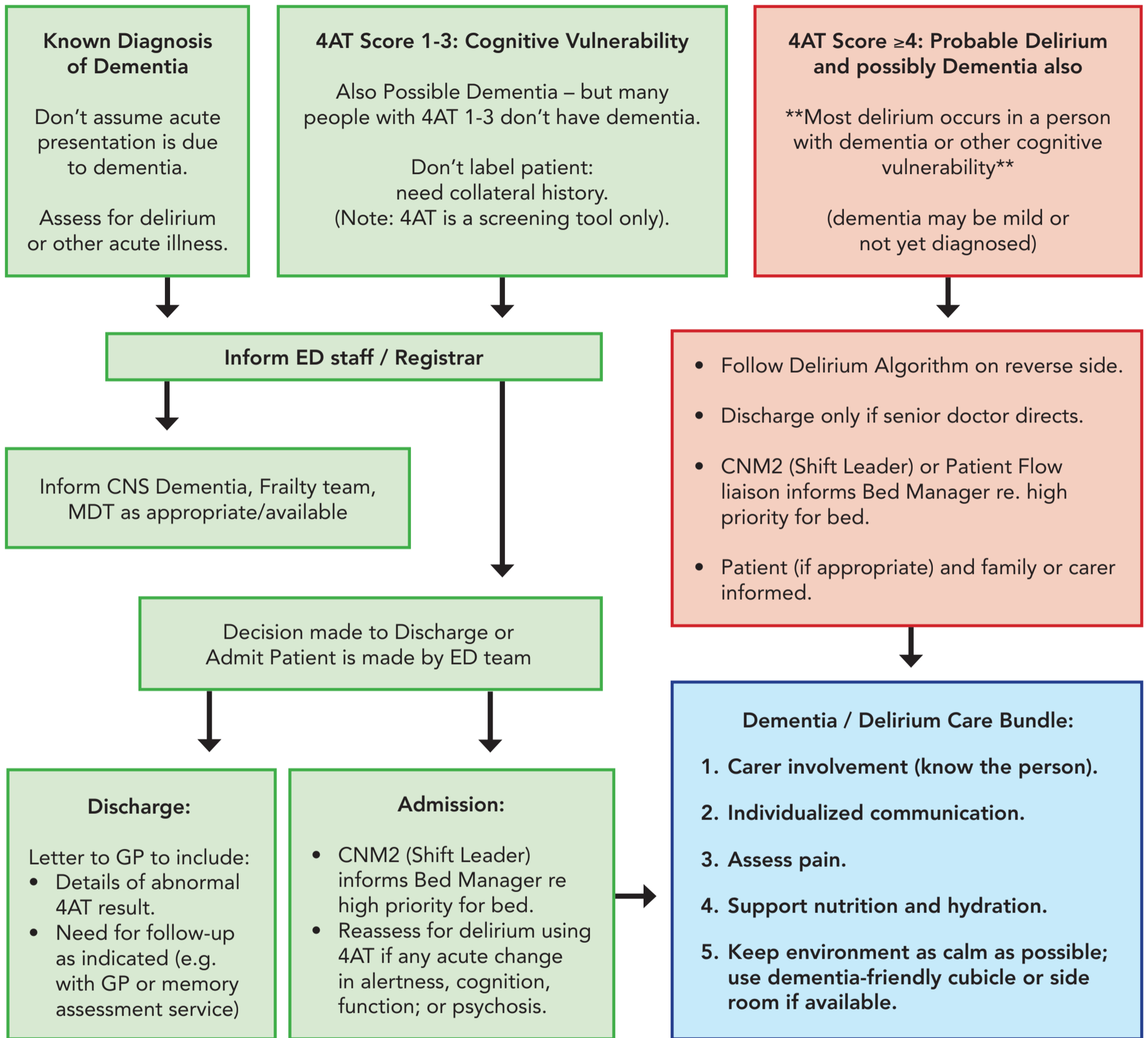


Dementia / Delirium Combined Pathway and Care Bundle for Emergency Department and Acute Medical Assessment Unit

This algorithm is for use only in adults, and is not intended for delirium due to alcohol or drug intoxication/ withdrawal.

(Follows assessment for delirium using 4AT rapid assessment tool at earliest point of contact- see reverse side)



NOTE: Care pathways cannot cover all clinical scenarios. Ultimate responsibility for the interpretation and application of this algorithm and pathway, the use of current information and a patient's overall care and wellbeing resides with the treating clinician.

National guidance document to support this algorithm and pathway, and more resources for acute hospital delirium/dementia care in Ireland: <https://dementiaphways.ie/care-pathways>

NICE Clinical Guideline Delirium (No. 103; 2010 - updated 2019) <https://www.nice.org.uk/guidance/cg103>

SIGN Guideline for Delirium 2019: <https://www.sign.ac.uk/sign-157-delirium.html>

Psychotropic medications for non-cognitive symptoms of dementia: (National Clinical Guideline No. 21). Available at: <https://health.gov.ie/national-patient-safety-office/ncec/national-clinical-guidelines/>

Validation of 4AT in ED: O'Sullivan D, Brady N, Manning E, O'Shea E, O'Grady S, O'Regan N, Timmons S. Validation of the 6-Item Cognitive Impairment Test and the 4AT test for combined delirium and dementia screening in older ED attendees. Age Ageing. 2018; 47:61-68. <https://academic.oup.com/ageing/article/47/1/61/4101644>

Sepsis Pathway Link: <https://www.hse.ie/eng/about/who/cspd/ncps/sepsis/resources/>

Acknowledgments: National working group to develop acute hospital dementia/delirium pathways. Membership details available at: <https://dementiaphways.ie/care-pathways>